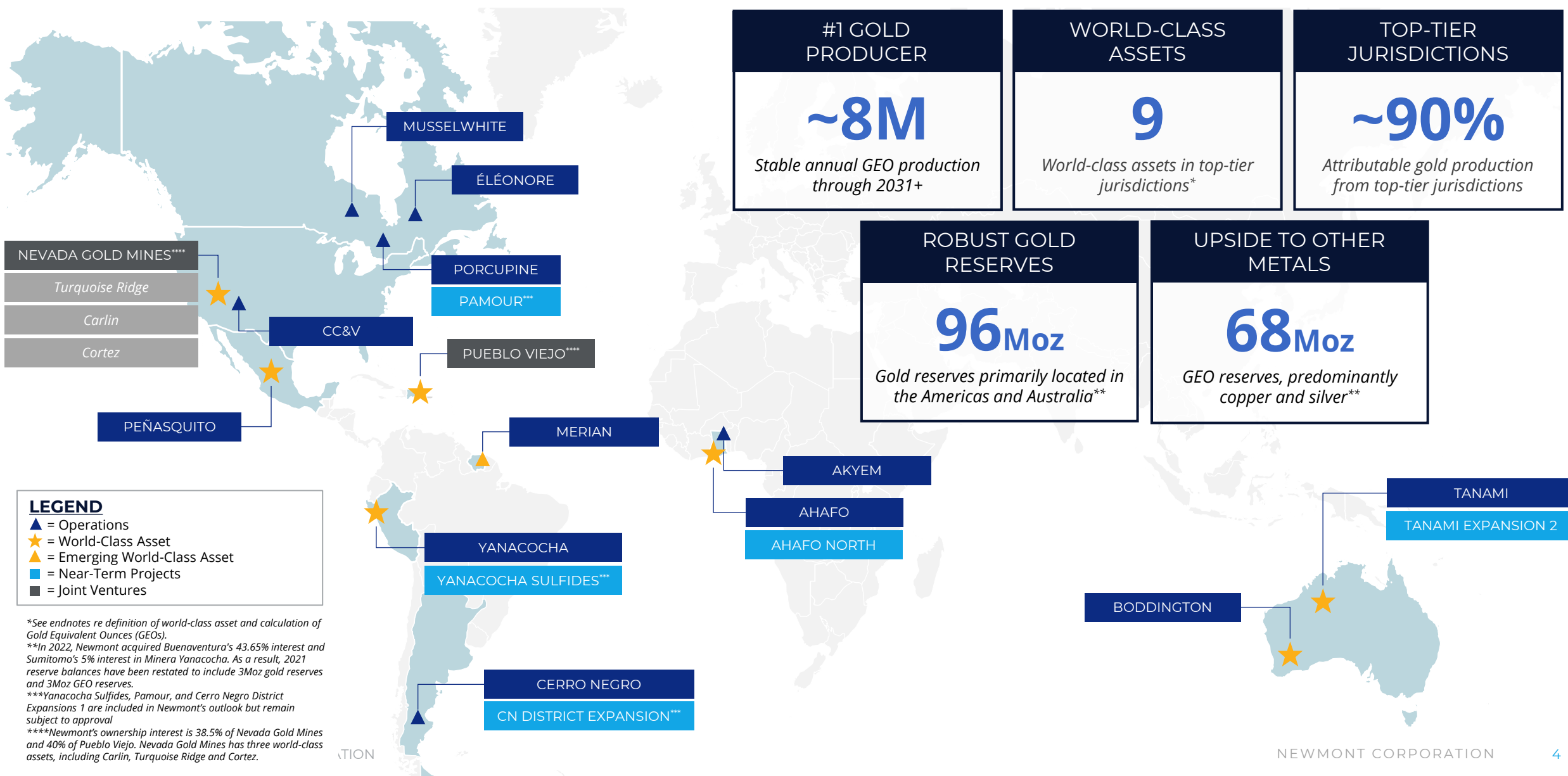


# World-Class Assets in Top-Tier Jurisdictions



# Project Pipeline to Sustain Production into 2040s



7+ YEARS

4 TO 7 YEARS

0 TO 4 YEARS

EXECUTION

DEFINITIVE  
FEASIBILITY

**YANACOCCHA SULFIDES**  
Peru – Gold (~45%), Copper (~45%),  
Silver (~10%)



**PUEBLO VIEJO  
EXPANSION JV**  
Dominican Republic – Gold



**TANAMI EXPANSION 2**  
Australia – Gold



**AHAFO NORTH**  
Ghana – Gold



**GOLDRUSH (NGM JV)**  
USA – Gold



**BODDINGTON LAYBACKS\*\***  
Australia – Gold



**AKYEM LAYBACK\*\***  
Ghana – Gold



**TURQUOISE RIDGE  
SHAFT (NGM JV)**  
USA – Gold

PREFEASIBILITY/  
FEASIBILITY

**GALORE CREEK JV**  
Canada – Gold (~20%), Copper (~75%),  
Silver (~5%)



**NORTE ABIERTO JV**  
Chile – Gold (~55%), Copper (~40%),  
Silver (~5%)



**NUEVA UNIÓN JV**  
Chile – Gold (~10%), Copper (~85%),  
Molybdenum (~5%)



**COFFEE**  
Canada – Gold



**AKYEM UNDERGROUND**  
Ghana – Gold



**OBERON (Tanami)**  
Australia – Gold



**APENSU UNDERGROUND (Ahafo)**  
Ghana – Gold



**PAMOUR (Porcupine)**  
Canada – Gold



**CERRO NEGRO DISTRICT  
EXPANSIONS 1**  
Argentina – Gold

CONCEPTUAL/  
SCOPING

**PEÑASQUITO LAYBACK\*\***  
Mexico – Gold (~20%) Silver (~40%),  
Zinc (~30%), Lead (~10%)



**SADDLE NORTH**  
Canada – Gold (~40%) Copper (~60%)



**CN DISTRICT EXPANSIONS 2**  
Argentina – Gold



**SABAJO EXTENSION  
(Merian)**  
Suriname – Gold



**SUBIKA UNDERGROUND  
GROWTH (Ahafo)**  
Ghana – Gold

## LEGEND\*

Included in 10-Year  
Production Profile

Gold Deposit

Other Metals

GREENFIELD

BROWNFIELD

&lt;\$500M Investment

\$500M - \$1.0B Investment

&gt;\$1.0B Investment

\*Attributable basis; JV projects not managed under Newmont investment system. Pueblo Viejo attributable capital is not reported in development capital outlook.  
\*\*Represents significant stripping campaigns at existing open pits, recorded primarily as Costs Applicable to Sales.